



Tsunami Evacuation Map Key

Disclaimer:

Digital map data sourced from Land Information New Zealand CROWN COPYRIGHT RESERVED.
The information displayed in the GIS has been taken from Whanganui District Council's databases and maps.
It is made available in good faith but its accuracy or completeness is not guaranteed. If the information is relied on in support of a resource consent it should be verified independently.

Scale: 1:39,000



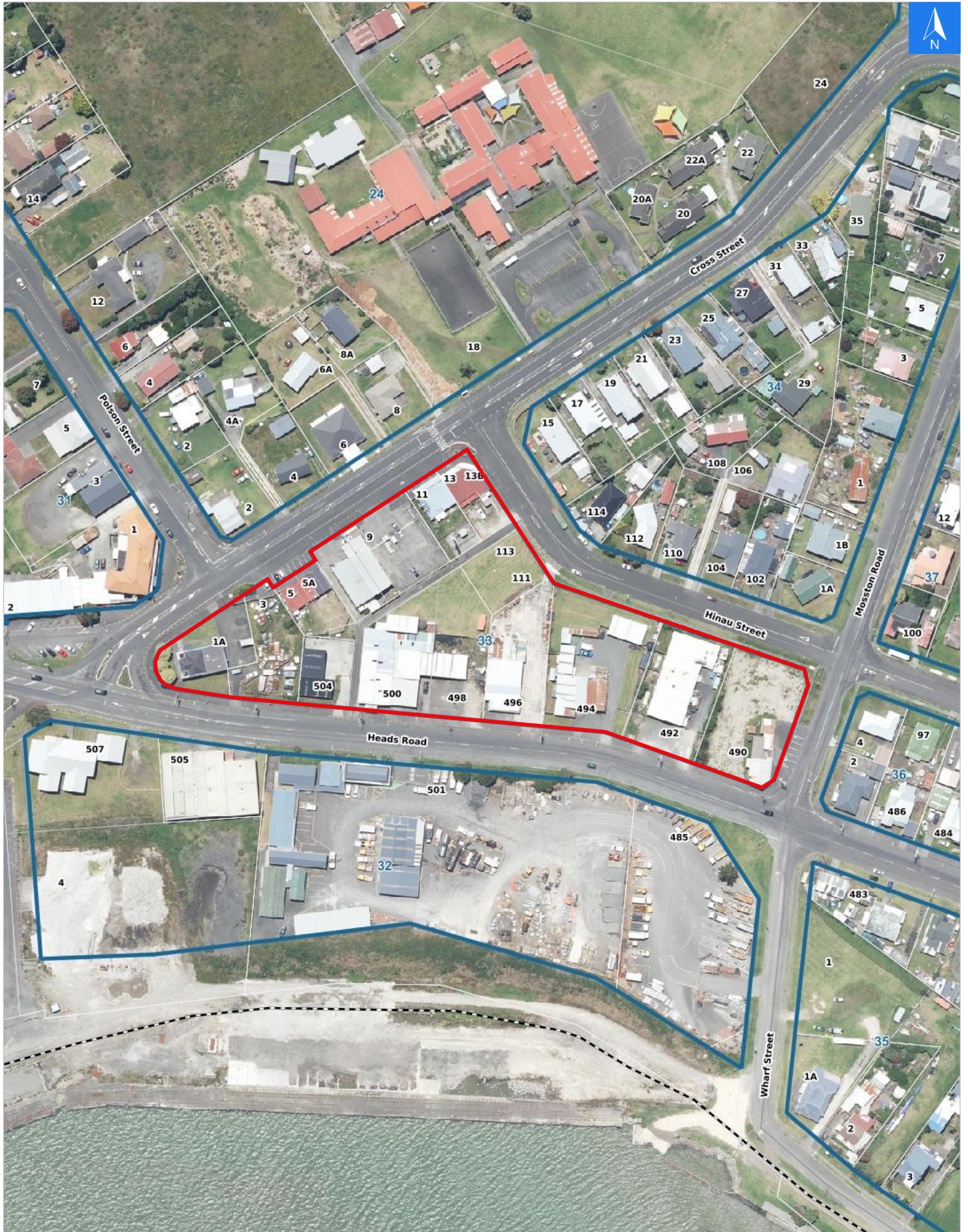


Disclaimer:

Digital map data sourced from Land Information New Zealand CROWN COPYRIGHT RESERVED.
The information displayed in the GIS has been taken from Whanganui District Council's databases and maps.
It is made available in good faith but its accuracy or completeness is not guaranteed. If the information is relied on in support of a resource consent it should be verified independently.

Wednesday, November 8, 2023

Scale 1: 2000





Wednesday, November 8, 2023

Disclaimer:

Digital map data sourced from Land Information New Zealand CROWN COPYRIGHT RESERVED.
The information displayed in the GIS has been taken from Whanganui District Council's databases and maps.
It is made available in good faith but its accuracy or completeness is not guaranteed. If the information is relied on in support of a resource consent it should be verified independently.

Tsunami Evacuation Addresses

Data sourced from LINZ

LINZ Address	Name	Time Advised	Notes
1A Cross Street, Castlecliff			
3 Cross Street, Castlecliff			
5 Cross Street, Castlecliff			
5A Cross Street, Castlecliff			
9 Cross Street, Castlecliff			
11 Cross Street, Castlecliff			
11A Cross Street, Castlecliff			
13 Cross Street, Castlecliff			
13A Cross Street, Castlecliff			
13B Cross Street, Castlecliff			
490 Heads Road, Castlecliff			
492 Heads Road, Castlecliff			
494 Heads Road, Castlecliff			
496 Heads Road, Castlecliff			
498 Heads Road, Castlecliff			
500 Heads Road, Castlecliff			
504 Heads Road, Castlecliff			
111 Hinau Street, Castlecliff			
113 Hinau Street, Castlecliff			