

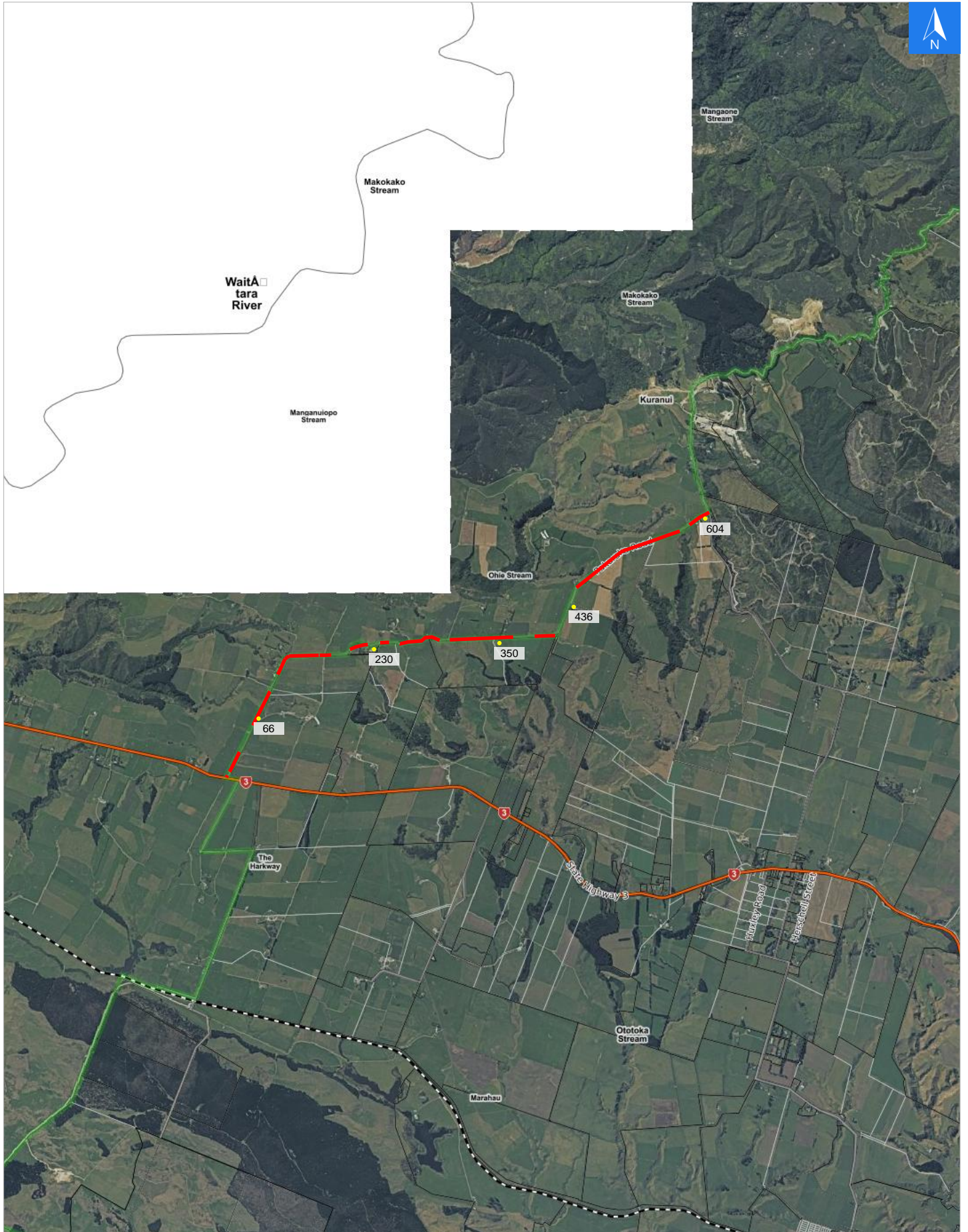


Wednesday, November 1, 2023

Disclaimer:

Digital map data sourced from Land Information New Zealand CROWN COPYRIGHT RESERVED.
The information displayed in the GIS has been taken from Whanganui District Council's databases and maps.
It is made available in good faith but its accuracy or completeness is not guaranteed. If the information is relied on in support of a resource consent it should be verified independently.

Scale 1: 50000





Wednesday, November 1, 2023

Disclaimer:

Digital map data sourced from Land Information New Zealand CROWN COPYRIGHT RESERVED.
The information displayed in the GIS has been taken from Whanganui District Council's databases and maps.
It is made available in good faith but its accuracy or completeness is not guaranteed. If the information is relied on in support of a resource consent it should be verified independently.

Road Evacuation Addresses

Data sourced from LINZ

LINZ Address	Notes	Date Time Visited	Placard
66 Pakaraka Road, Waittara, Whanganui			W Y1 Y2 R1 R2
230 Pakaraka Road, Waittara, Whanganui			W Y1 Y2 R1 R2
350 Pakaraka Road, Waittara, Whanganui			W Y1 Y2 R1 R2
436 Pakaraka Road, Waittara, Whanganui			W Y1 Y2 R1 R2
604 Pakaraka Road, Waittara, Whanganui			W Y1 Y2 R1 R2