

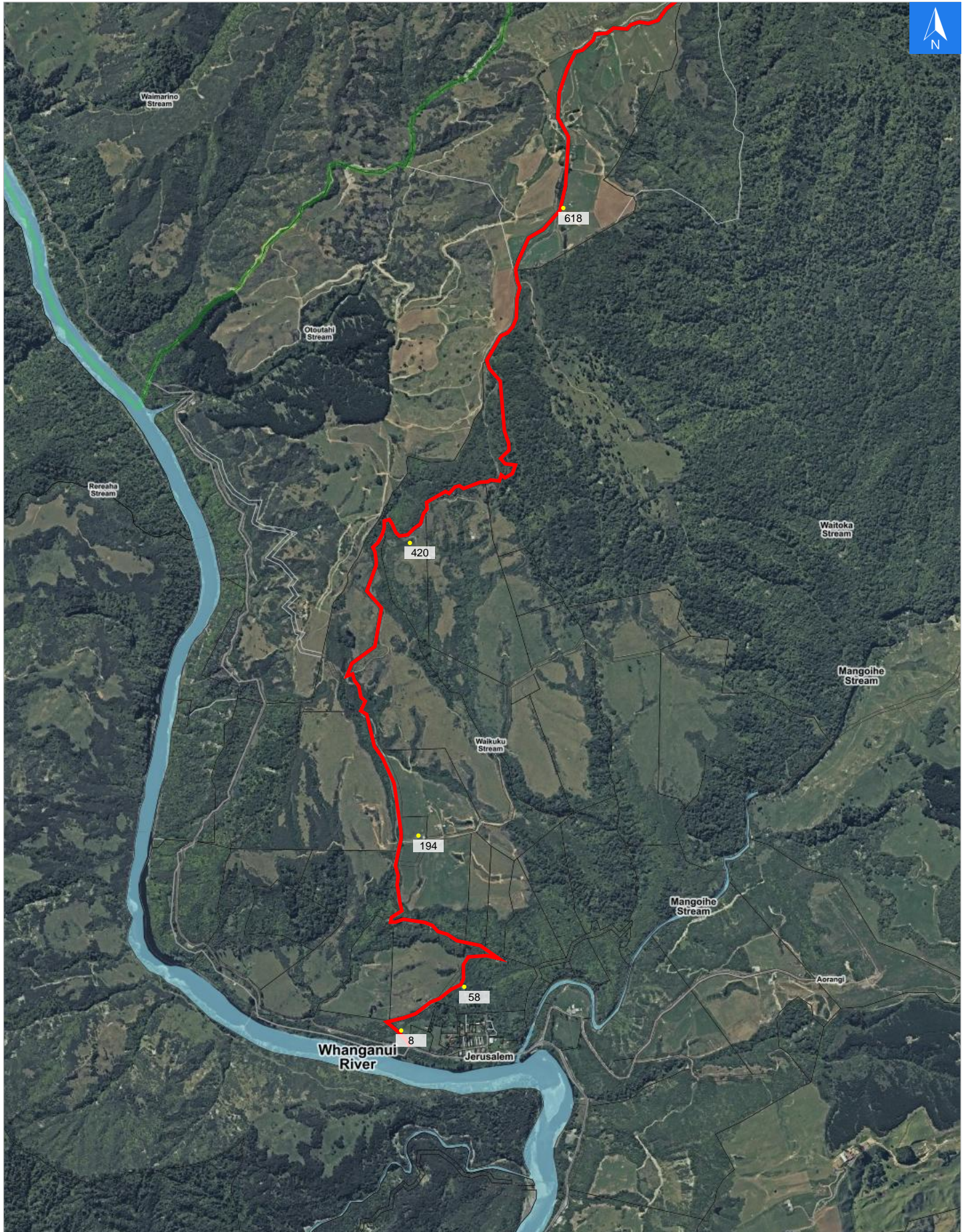


Wednesday, November 1, 2023

Disclaimer:

Digital map data sourced from Land Information New Zealand CROWN COPYRIGHT RESERVED.
The information displayed in the GIS has been taken from Whanganui District Council's databases and maps.
It is made available in good faith but its accuracy or completeness is not guaranteed. If the information is relied on in support of a resource consent it should be verified independently.

Scale 1: 25000





Wednesday, November 1, 2023

Disclaimer:

Digital map data sourced from Land Information New Zealand CROWN COPYRIGHT RESERVED.
The information displayed in the GIS has been taken from Whanganui District Council's databases and maps.
It is made available in good faith but its accuracy or completeness is not guaranteed. If the information is relied on in support of a resource consent it should be verified independently.

Road Evacuation Addresses

Data sourced from LINZ

LINZ Address	Notes	Date Time Visited	Placard
8 Otaranoho Road, Ranana, Whanganui			W Y1 Y2 R1 R2
58 Otaranoho Road, Ranana, Whanganui			W Y1 Y2 R1 R2
194 Otaranoho Road, Ranana, Whanganui			W Y1 Y2 R1 R2
420 Otaranoho Road, Ranana, Whanganui			W Y1 Y2 R1 R2
618 Otaranoho Road, Pipiriki, Whanganui			W Y1 Y2 R1 R2