

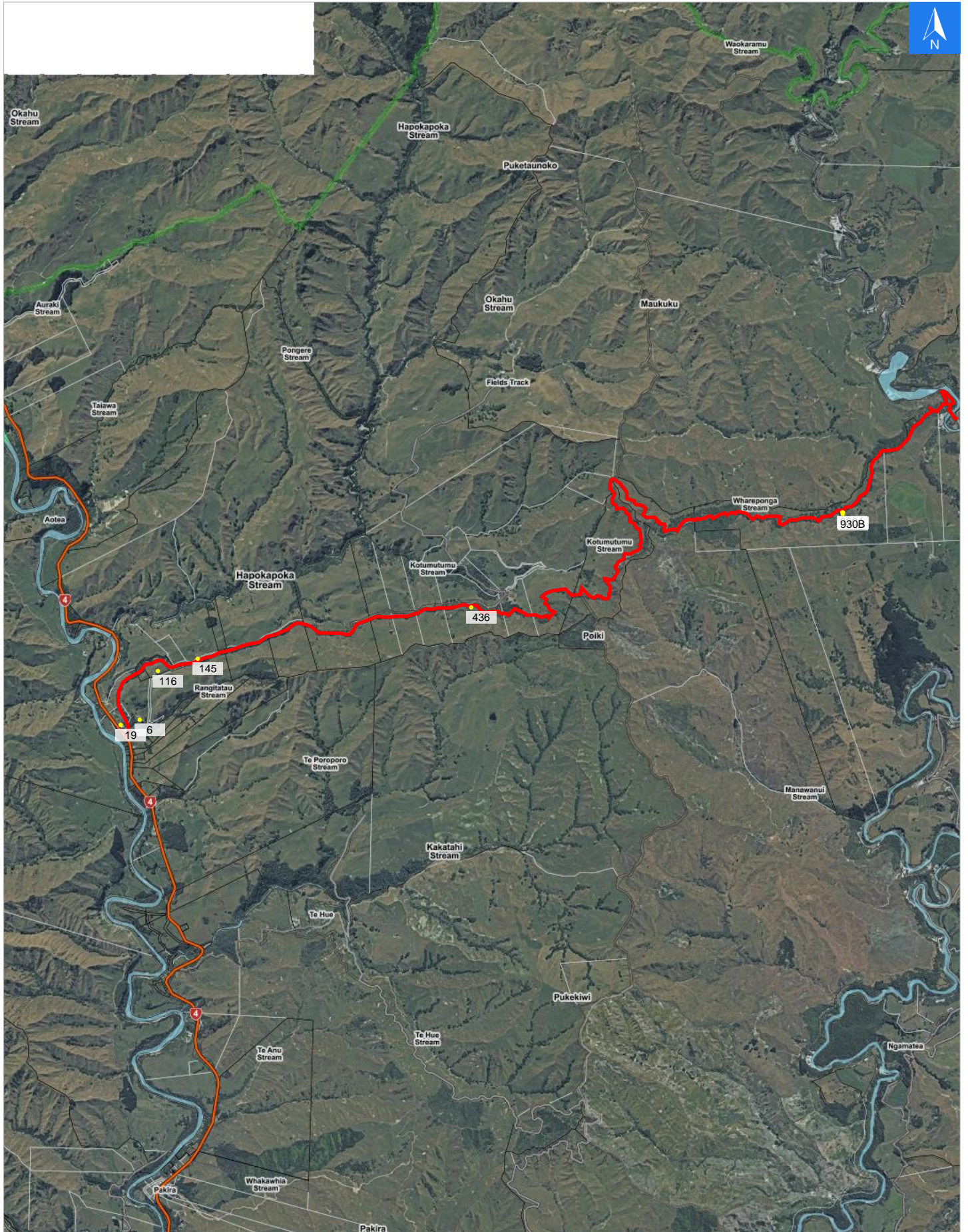


### Disclaimer:

Digital map data sourced from Land Information New Zealand CROWN COPYRIGHT RESERVED.  
The information displayed in the GIS has been taken from Whanganui District Council's databases and maps.  
It is made available in good faith but its accuracy or completeness is not guaranteed. If the information is relied on in support of a resource consent it should be verified independently.

Wednesday, November 1, 2023

Scale 1: 50000







Wednesday, November 1, 2023

### Disclaimer:

Digital map data sourced from Land Information New Zealand CROWN COPYRIGHT RESERVED.  
The information displayed in the GIS has been taken from Whanganui District Council's databases and maps.  
It is made available in good faith but its accuracy or completeness is not guaranteed. If the information is relied on in support of a resource consent it should be verified independently.

### Road Evacuation Addresses

Data sourced from LINZ

LINZ Address	Notes	Date Time Visited	Placard
6 Fields Track, Kakatahi, Whanganui			W Y1 Y2 R1 R2
19 Fields Track, Kakatahi, Whanganui			W Y1 Y2 R1 R2
116 Fields Track, Kakatahi, Whanganui			W Y1 Y2 R1 R2
145 Fields Track, Kakatahi, Whanganui			W Y1 Y2 R1 R2
436 Fields Track, Kakatahi, Whanganui			W Y1 Y2 R1 R2
930 Fields Track, Kakatahi, Whanganui			W Y1 Y2 R1 R2
930A Fields Track, Kakatahi, Whanganui			W Y1 Y2 R1 R2
930B Fields Track, Kakatahi, Whanganui			W Y1 Y2 R1 R2