



Rapid Building Evacuation Map Key

Disclaimer:

Digital map data sourced from Land Information New Zealand CROWN COPYRIGHT RESERVED.
The information displayed in the GIS has been taken from Whanganui District Council's databases and maps.
It is made available in good faith but its accuracy or completeness is not guaranteed. If the information is relied on in support of a resource consent it should be verified independently.

Scale: 1:19,000



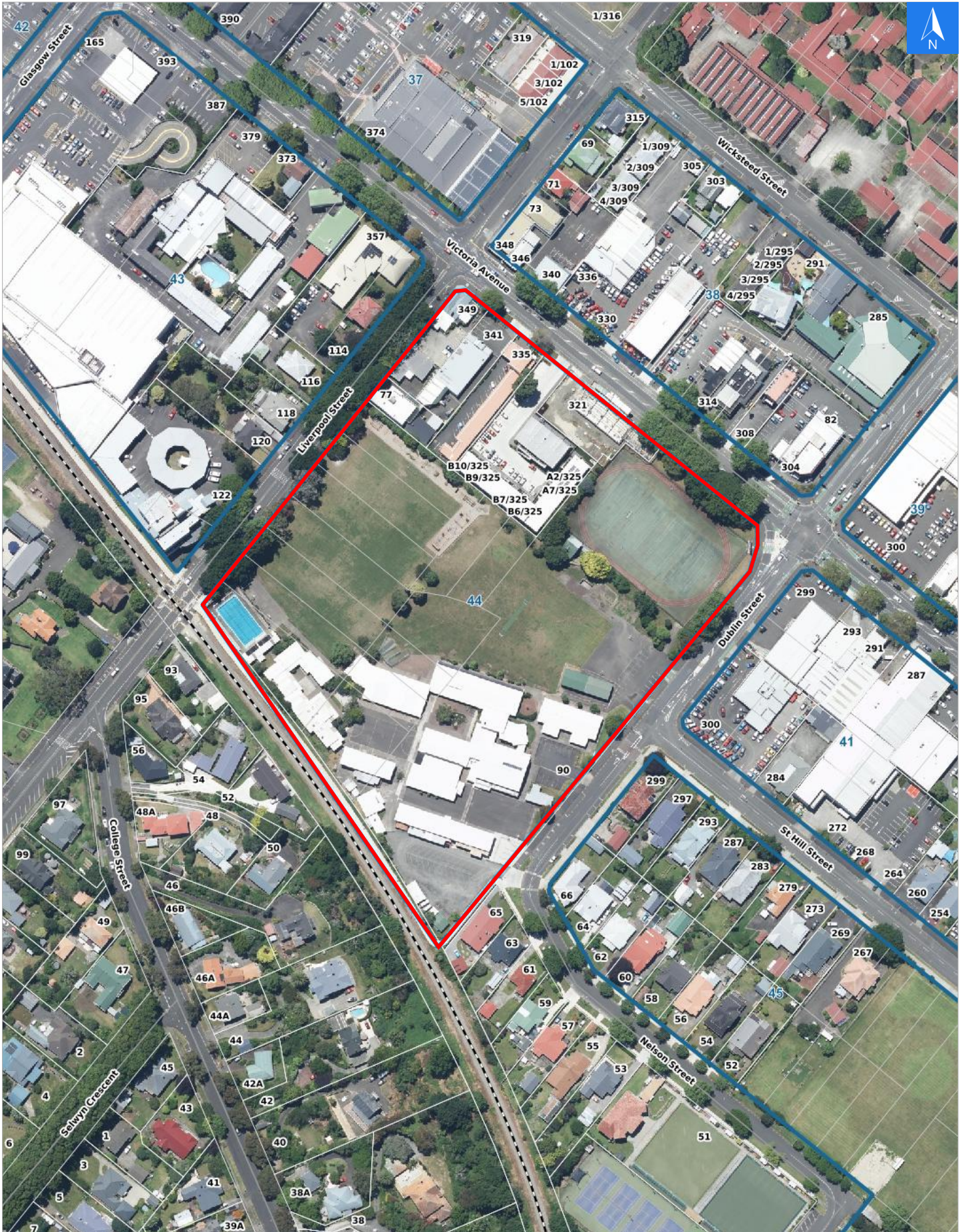


Disclaimer:

Digital map data sourced from Land Information New Zealand CROWN COPYRIGHT RESERVED.
The information displayed in the GIS has been taken from Whanganui District Council's databases and maps.
It is made available in good faith but its accuracy or completeness is not guaranteed. If the information is relied on in support of a resource consent it should be verified independently.

Wednesday, November 8, 2023

Scale 1: 2500





Wednesday, November 8, 2023

Disclaimer:

Digital map data sourced from Land Information New Zealand CROWN COPYRIGHT RESERVED.
The information displayed in the GIS has been taken from Whanganui District Council's databases and maps.
It is made available in good faith but its accuracy or completeness is not guaranteed. If the information is relied on in support of a resource consent it should be verified independently.

Rapid Building Assessment Evacuation Addresses

Data sourced from LINZ

LINZ Address	Name	Time Advised	Notes
90 Dublin Street			
77 Liverpool Street			
321 Victoria Avenue			
B1/325 Victoria Avenue			
A1/325 Victoria Avenue			
B2/325 Victoria Avenue			
A2/325 Victoria Avenue			
A3/325 Victoria Avenue			
B3/325 Victoria Avenue			
A4/325 Victoria Avenue			
B4/325 Victoria Avenue			
B5/325 Victoria Avenue			
A5/325 Victoria Avenue			
B6/325 Victoria Avenue			
A6/325 Victoria Avenue			
A7/325 Victoria Avenue			
B7/325 Victoria Avenue			
B8/325 Victoria Avenue			
A8/325 Victoria Avenue			
B9/325 Victoria Avenue			
B10/325 Victoria Avenue			
335 Victoria Avenue			
341 Victoria Avenue			
349 Victoria Avenue			