



## Rapid Building Evacuation Map Key

**Disclaimer:**

Digital map data sourced from Land Information New Zealand CROWN COPYRIGHT RESERVED.  
The information displayed in the GIS has been taken from Whanganui District Council's databases and maps.  
It is made available in good faith but its accuracy or completeness is not guaranteed. If the information is relied on in support of a resource consent it should be verified independently.

Scale: 1:19,000



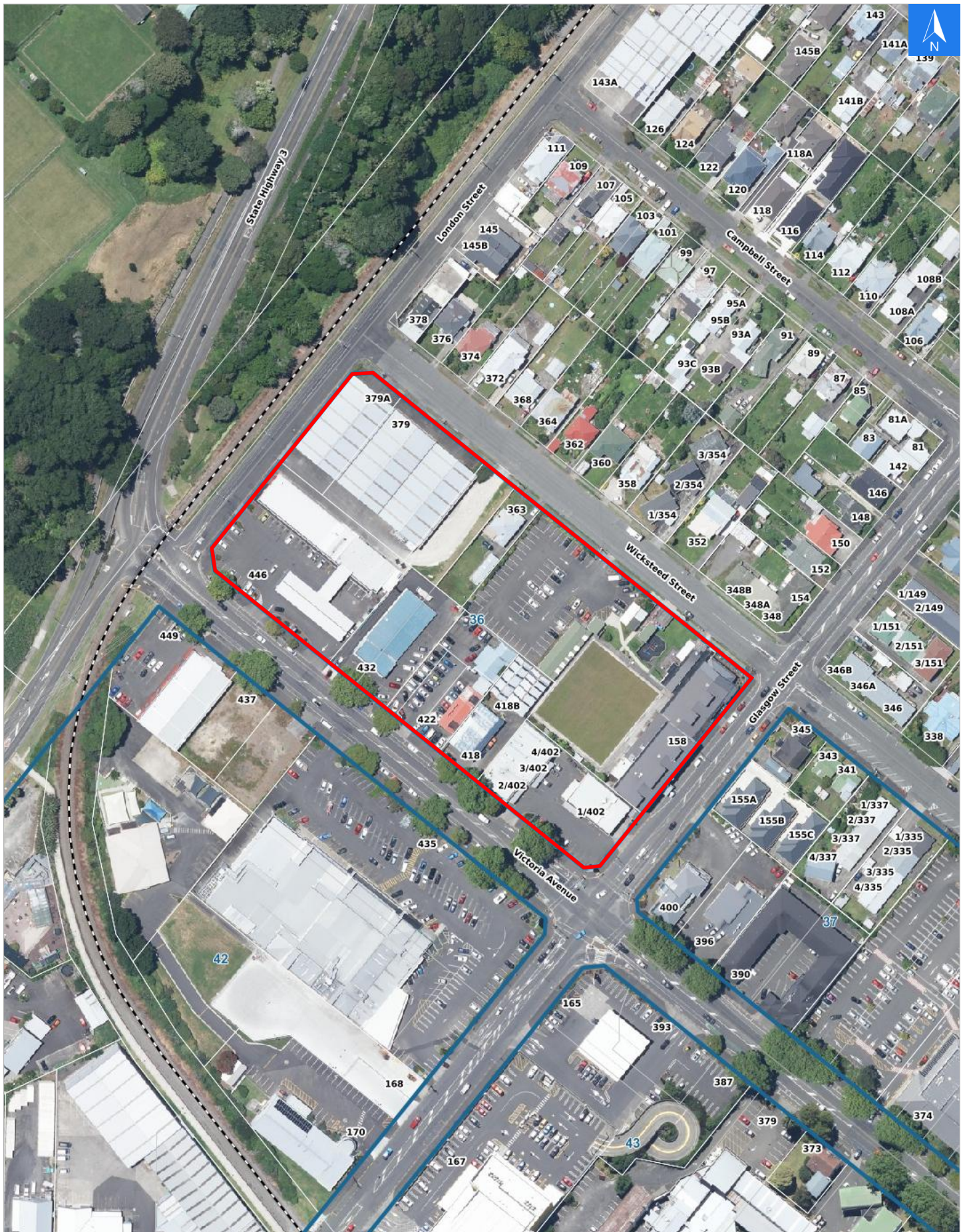


Wednesday, November 1, 2023

Disclaimer:

Digital map data sourced from Land Information New Zealand CROWN COPYRIGHT RESERVED.  
The information displayed in the GIS has been taken from Whanganui District Council's databases and maps.  
It is made available in good faith but its accuracy or completeness is not guaranteed. If the information is relied on in support of a resource consent it should be verified independently.

Scale 1: 2000





Wednesday, November 1, 2023

**Disclaimer:**

Digital map data sourced from Land Information New Zealand CROWN COPYRIGHT RESERVED.  
The information displayed in the GIS has been taken from Whanganui District Council's databases and maps.  
It is made available in good faith but its accuracy or completeness is not guaranteed. If the information is relied on in support of a resource consent it should be verified independently.

## Rapid Building Assessment Evacuation Addresses

Data sourced from LINZ

LINZ Address	Name	Time Advised	Notes
158 Glasgow Street			
1/402 Victoria Avenue			
2/402 Victoria Avenue			
3/402 Victoria Avenue			
4/402 Victoria Avenue			
418 Victoria Avenue			
418B Victoria Avenue			
422 Victoria Avenue			
432 Victoria Avenue			
446 Victoria Avenue			
363 Wicksteed Street			
379 Wicksteed Street			
379A Wicksteed Street			