

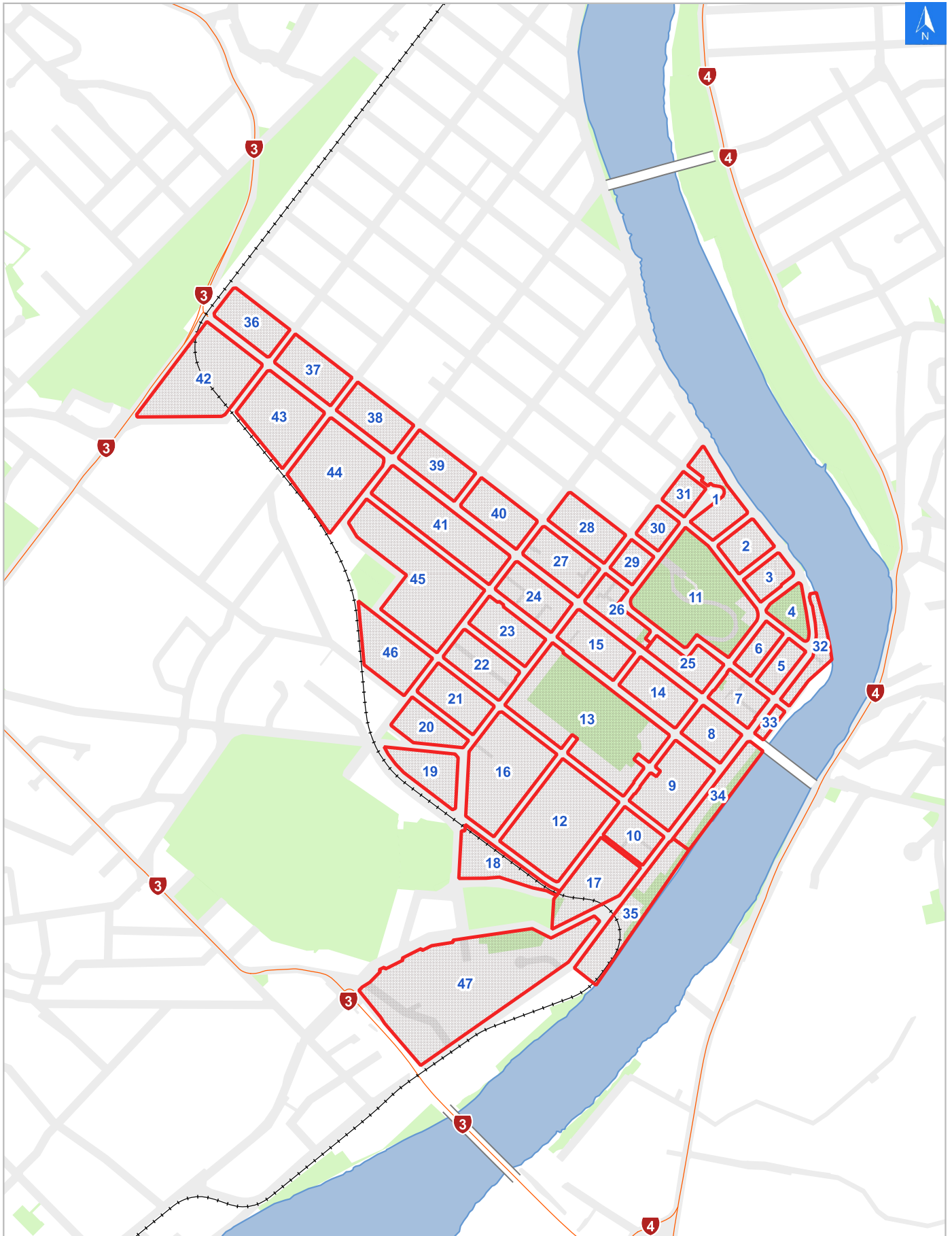


Rapid Building Evacuation Map Key

Disclaimer:

Digital map data sourced from Land Information New Zealand CROWN COPYRIGHT RESERVED.
The information displayed in the GIS has been taken from Whanganui District Council's databases and maps.
It is made available in good faith but its accuracy or completeness is not guaranteed. If the information is relied on in support of a resource consent it should be verified independently.

Scale: 1:19,000



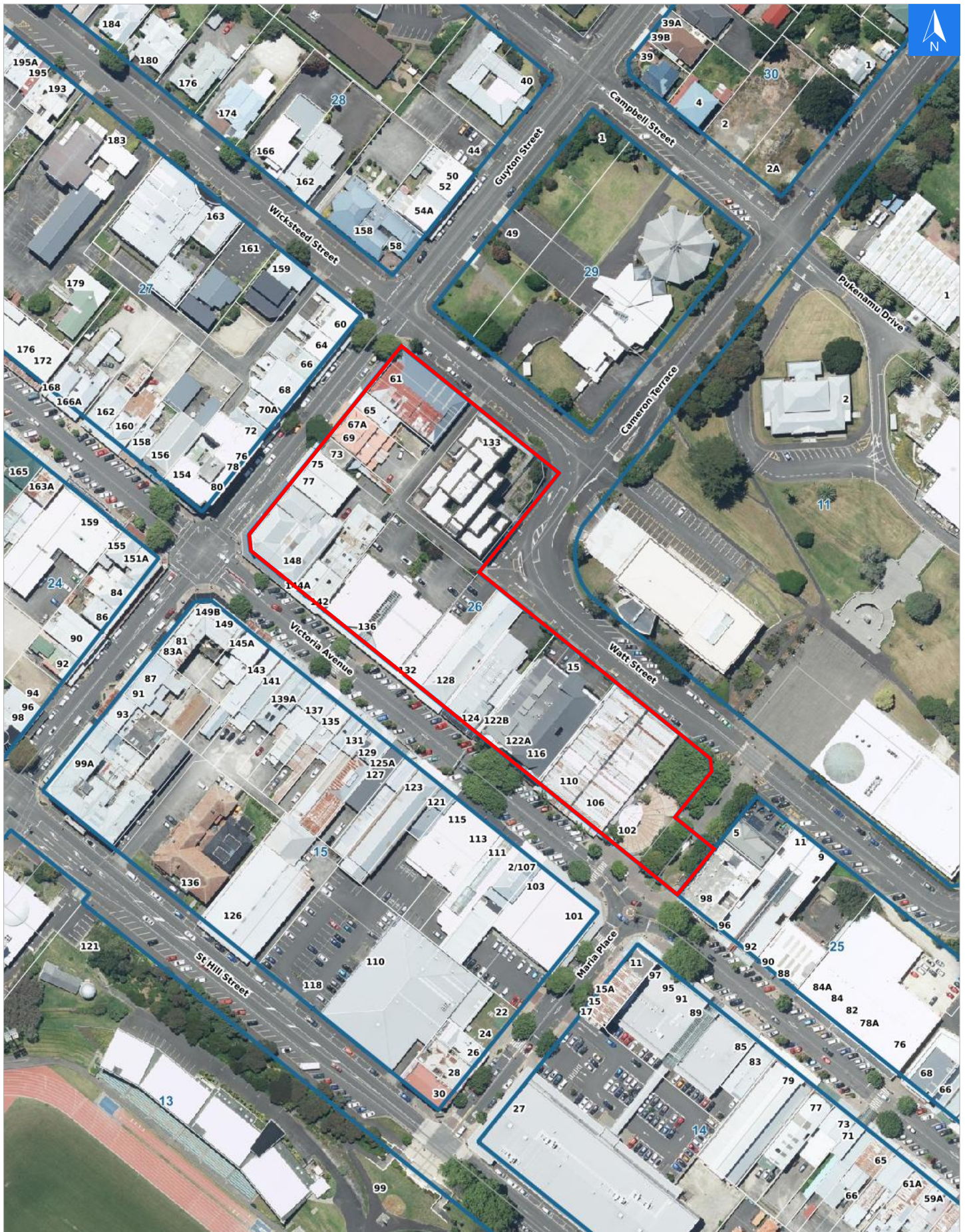


Disclaimer:

Digital map data sourced from Land Information New Zealand CROWN COPYRIGHT RESERVED.
The information displayed in the GIS has been taken from Whanganui District Council's databases and maps.
It is made available in good faith but its accuracy or completeness is not guaranteed. If the information is relied on in support of a resource consent it should be verified independently.

Wednesday, November 8, 2023

Scale 1: 2000





Wednesday, November 8, 2023

Disclaimer:

Digital map data sourced from Land Information New Zealand CROWN COPYRIGHT RESERVED.
The information displayed in the GIS has been taken from Whanganui District Council's databases and maps.
It is made available in good faith but its accuracy or completeness is not guaranteed. If the information is relied on in support of a resource consent it should be verified independently.

Rapid Building Assessment Evacuation Addresses

Data sourced from LINZ

LINZ Address	Name	Time Advised	Notes
61 Guyton Street			
65 Guyton Street			
67A Guyton Street			
69 Guyton Street			
73 Guyton Street			
75 Guyton Street			
77 Guyton Street			
102 Victoria Avenue			
106 Victoria Avenue			
110 Victoria Avenue			
116 Victoria Avenue			
122A Victoria Avenue			
122B Victoria Avenue			
124 Victoria Avenue			
128 Victoria Avenue			
130 Victoria Avenue			
132 Victoria Avenue			
136 Victoria Avenue			
142 Victoria Avenue			
142A Victoria Avenue			
144 Victoria Avenue			
144A Victoria Avenue			
148 Victoria Avenue			
15 Watt Street			
133 Wicksteed Street			