

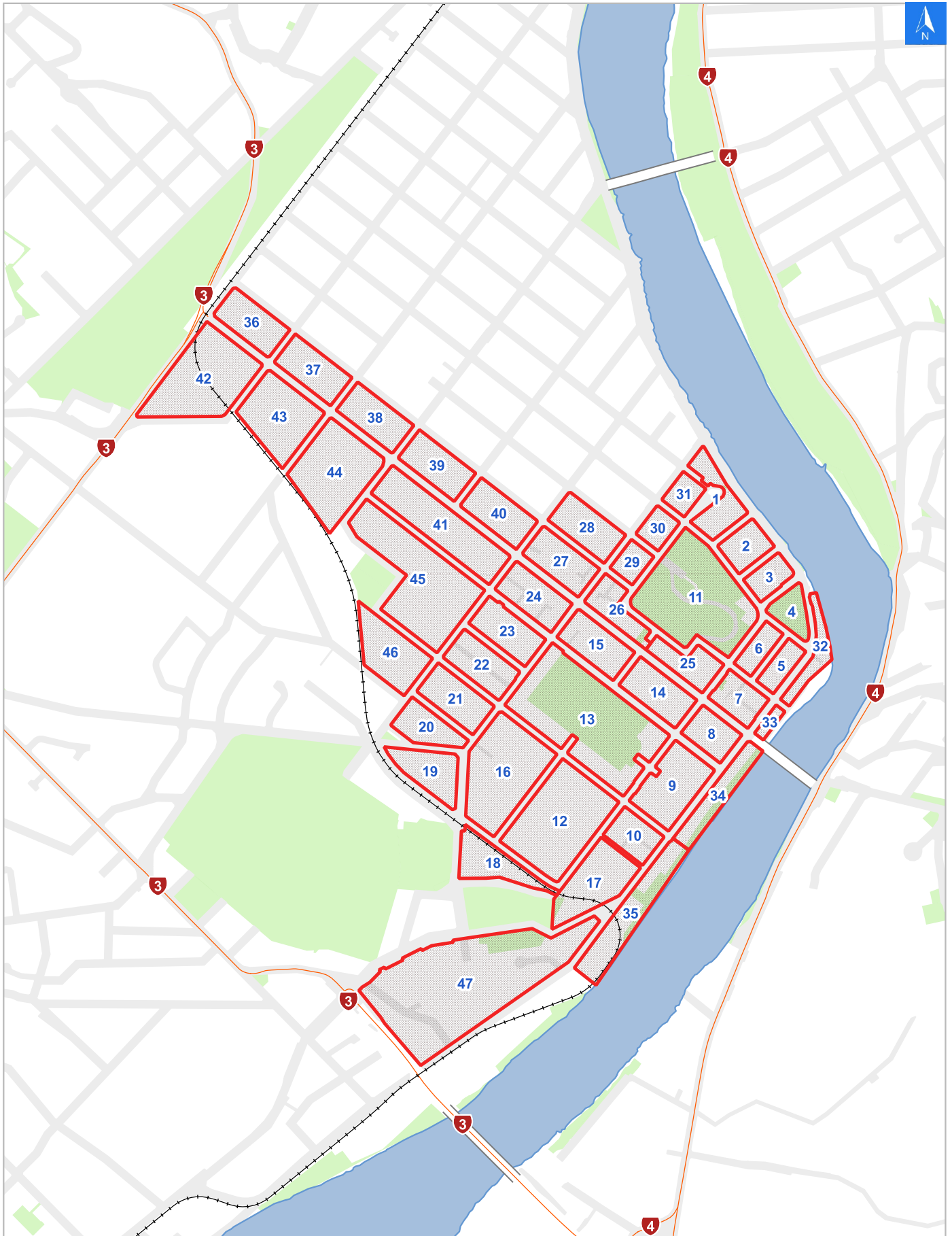


Rapid Building Evacuation Map Key

Disclaimer:

Digital map data sourced from Land Information New Zealand CROWN COPYRIGHT RESERVED.
The information displayed in the GIS has been taken from Whanganui District Council's databases and maps.
It is made available in good faith but its accuracy or completeness is not guaranteed. If the information is relied on in support of a resource consent it should be verified independently.

Scale: 1:19,000



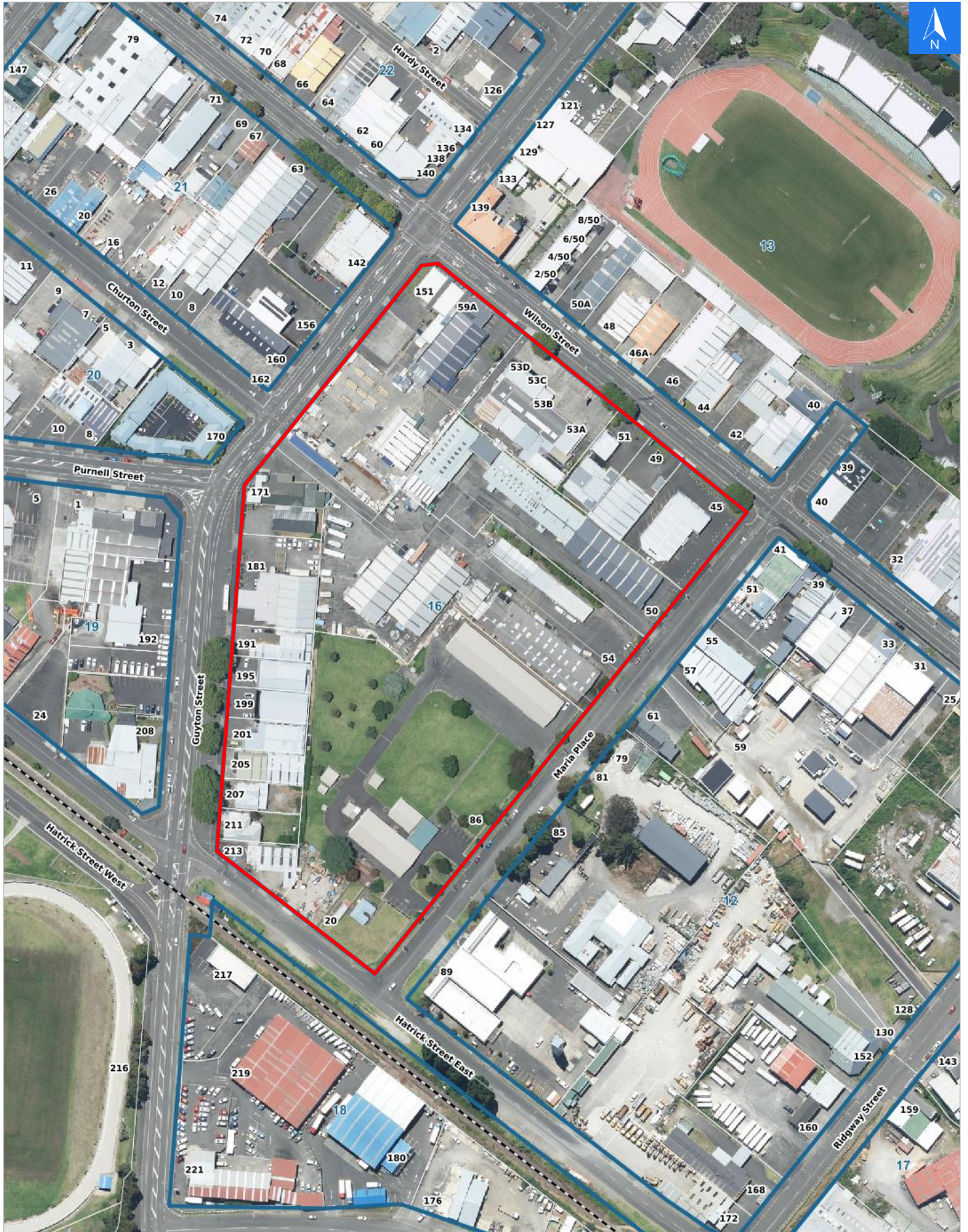


Wednesday, November 8, 2023

Disclaimer:

Digital map data sourced from Land Information New Zealand CROWN COPYRIGHT RESERVED. The information displayed in the GIS has been taken from Whanganui District Council's databases and maps. It is made available in good faith but its accuracy or completeness is not guaranteed. If the information is relied on in support of a resource consent it should be verified independently.

Scale 1 : 2500





Wednesday, November 8, 2023

Disclaimer:

Digital map data sourced from Land Information New Zealand CROWN COPYRIGHT RESERVED.
The information displayed in the GIS has been taken from Whanganui District Council's databases and maps.
It is made available in good faith but its accuracy or completeness is not guaranteed. If the information is relied on in support of a resource consent it should be verified independently.

Rapid Building Assessment Evacuation Addresses

Data sourced from LINZ

LINZ Address	Name	Time Advised	Notes
151 Guyton Street			
171 Guyton Street			
181 Guyton Street			
191 Guyton Street			
195 Guyton Street			
199 Guyton Street			
201 Guyton Street			
205 Guyton Street			
207 Guyton Street			
211 Guyton Street			
213 Guyton Street			
20 Hatrick Street East			
50 Maria Place			
54 Maria Place			
86 Maria Place			
45 Wilson Street			
49 Wilson Street			
51 Wilson Street			
53A Wilson Street			
53B Wilson Street			
53C Wilson Street			
53D Wilson Street			
59A Wilson Street			