



Flood Evacuation Map Key

Disclaimer:

Digital map data sourced from Land Information New Zealand CROWN COPYRIGHT RESERVED.
The information displayed in the GIS has been taken from Whanganui District Council's databases and maps.
It is made available in good faith but its accuracy or completeness is not guaranteed. If the information is relied on in support of a resource consent it should be verified independently.

Scale: 1:39,000



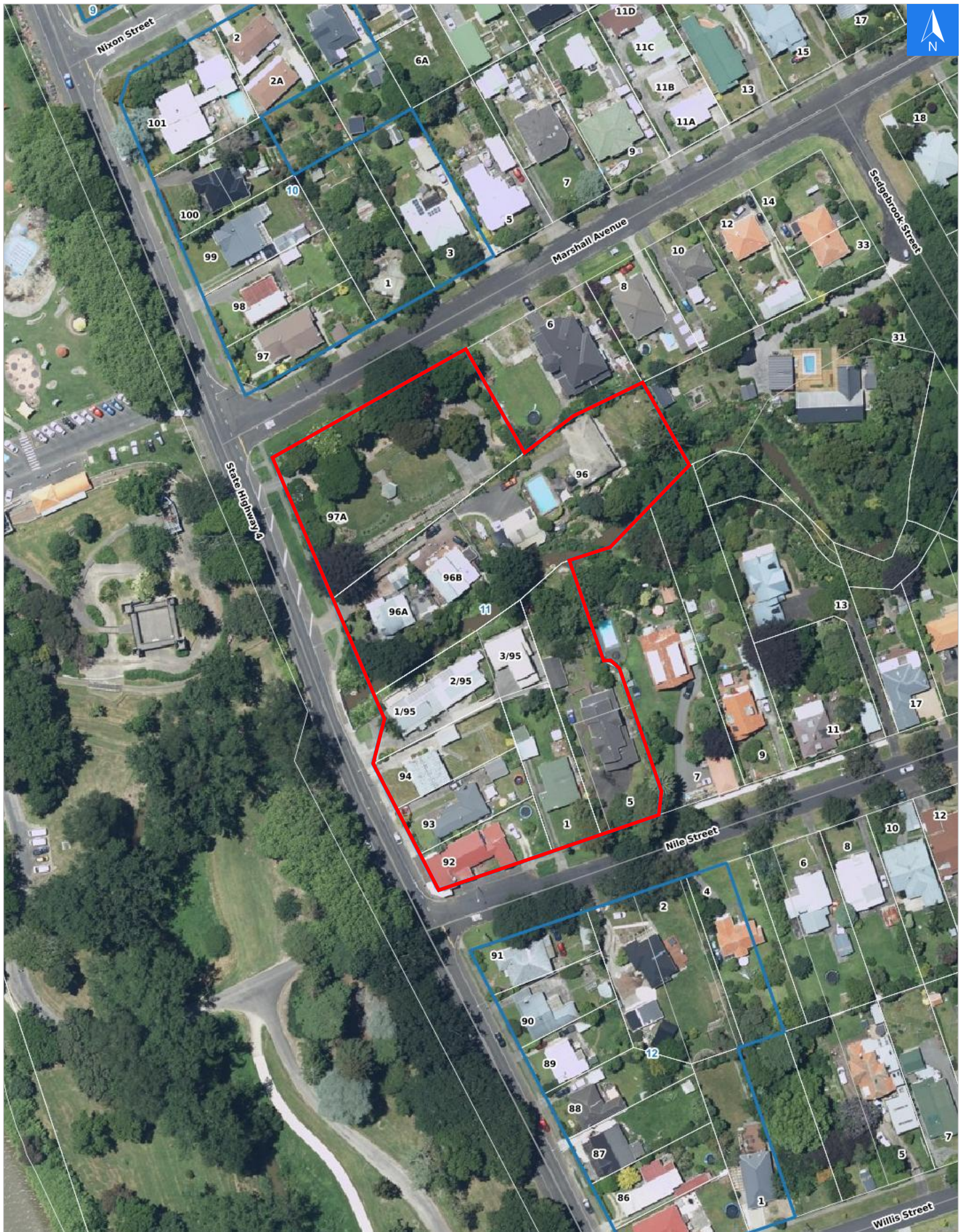


Disclaimer:

Digital map data sourced from Land Information New Zealand CROWN COPYRIGHT RESERVED.
The information displayed in the GIS has been taken from Whanganui District Council's databases and maps.
It is made available in good faith but its accuracy or completeness is not guaranteed. If the information is relied on in support of a resource consent it should be verified independently.

Wednesday, November 8, 2023

Scale 1: 1500





Wednesday, November 8, 2023

Disclaimer:

Digital map data sourced from Land Information New Zealand CROWN COPYRIGHT RESERVED.
The information displayed in the GIS has been taken from Whanganui District Council's databases and maps.
It is made available in good faith but its accuracy or completeness is not guaranteed. If the information is relied on in support of a resource consent it should be verified independently.

Flood Evacuation Addresses

Data sourced from LINZ

LINZ Address	Name	Time Advised	Notes
92 Anzac Parade, Whanganui East			
93 Anzac Parade, Whanganui East			
94 Anzac Parade, Whanganui East			
1/95 Anzac Parade, Whanganui East			
2/95 Anzac Parade, Whanganui East			
3/95 Anzac Parade, Whanganui East			
96 Anzac Parade, Whanganui East			
96A Anzac Parade, Whanganui East			
96B Anzac Parade, Whanganui East			
97A Anzac Parade, Whanganui East			
1 Nile Street, Whanganui East			
5 Nile Street, Whanganui East			